



ecosostenibile.eu

eco₂

ESG Platform SaaS

supports companies to reach ESG & compliance goals and sustainability path

SOCIAL AND ENVIRONMENTAL INITIATIVE
by Oskelen's production chain suppliers for the pirarucu bag

PROJECTS 5

PEOPLE 184

SOCIAL ENVIRONMENTAL NETWORK

communities

MAIN SOCIAL INITIATIVES

- education
- environmental
- life quality partnerships

PRODUCTION ACTIVITIES

Ilha de Marajò, PA

Belém, PA

BRAZIL

Franca, SP

Três Rios, RJ

Rio de Janeiro, RJ

OSKLEN

ecosostenibile.eu



eCO₂[®] is the unique modular and scalable ESG platform which allows to internalize ESG processes instead of outsourcing them but above all to avoid annual data-entry, automating the collection of information already contained into the company ERP through APIs; each module is equipped with dynamic dashboards completely custom (IE SGR), that guarantee constant plan & control related to the KPIs defined by the user, measuring the whole ESG company impact and certifiable reporting:

- **Governance**, strategy overview (ESG performance, simulations what-if/scenario, benchmarks, MBO)
- **Sustainability Disclosure** (Taxonomy compliance), materiality matrix, social, SDG, report GRI/SASB;
- **Carbon Footprint**, ISO, offsetting, Carbon Emission Factor D-Base, Science Based Target;
- **Circular Economy**, Long Life-Cycle Assessment, product as service, re-raw materials, renewable energy;
- **EU Emission Trading System** compliance, risk assessment (€85,51/tCO₂ Dic21, +430% since Mar20);
- Each module is equipped by features as **Blockchain** for energy efficiency projects, **Artificial Intelligence & IoT** predictive models for consumption/saving and Value Added Services ([lifecycle movie](#), [Go-live CO₂ counter](#)).

From the international benchmarking eCO₂[®] results the only ESG PaaS modular and scalable which realize **misurable** templates and report (no assessment), **certifiable** (by third entity), **comparable** with supply chain and competitor.

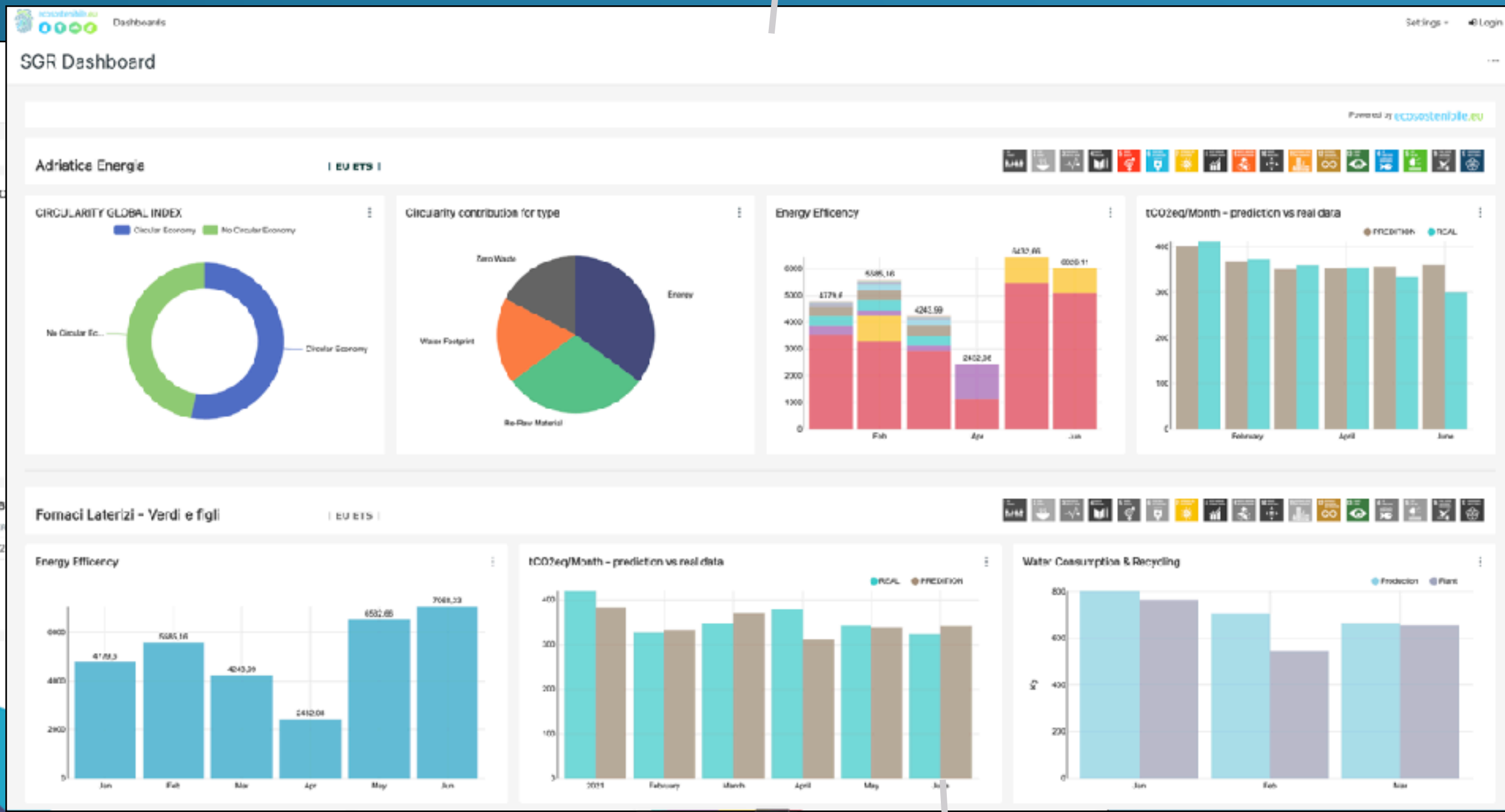
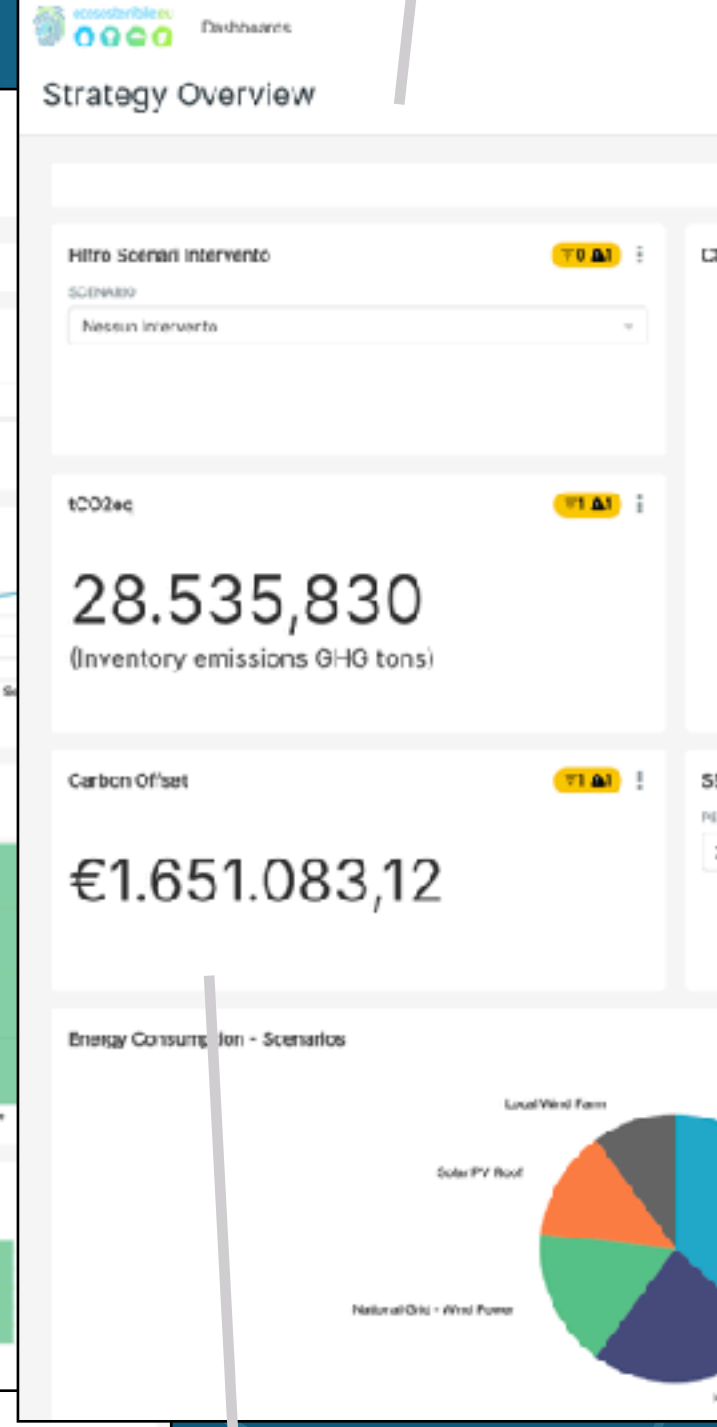
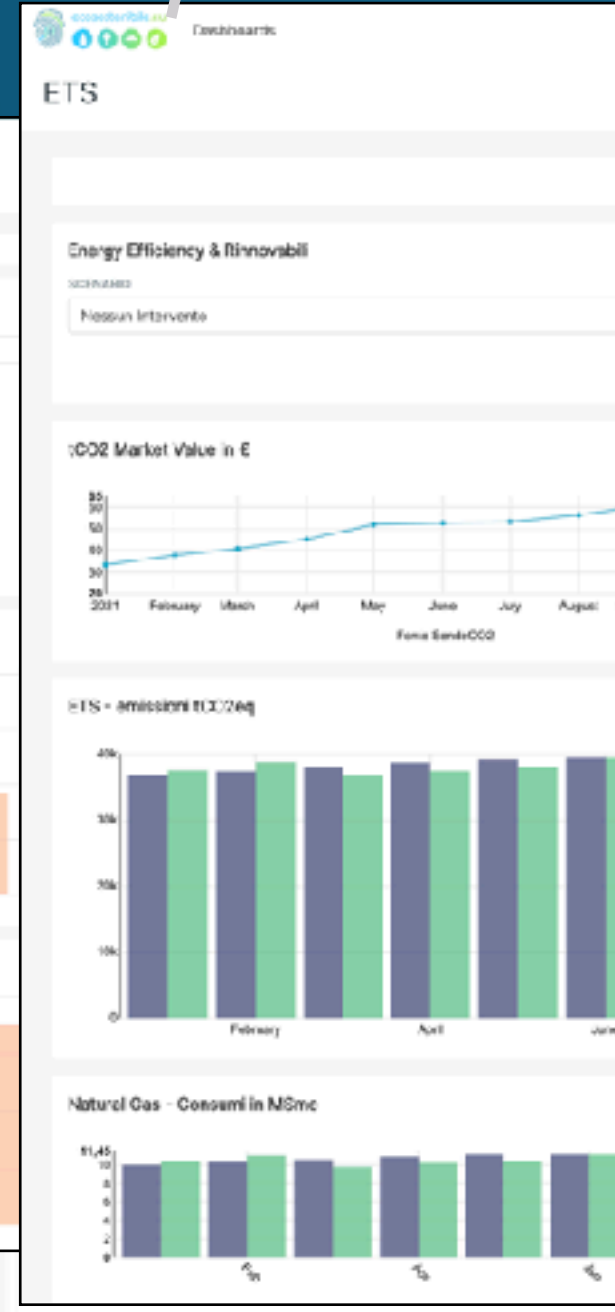
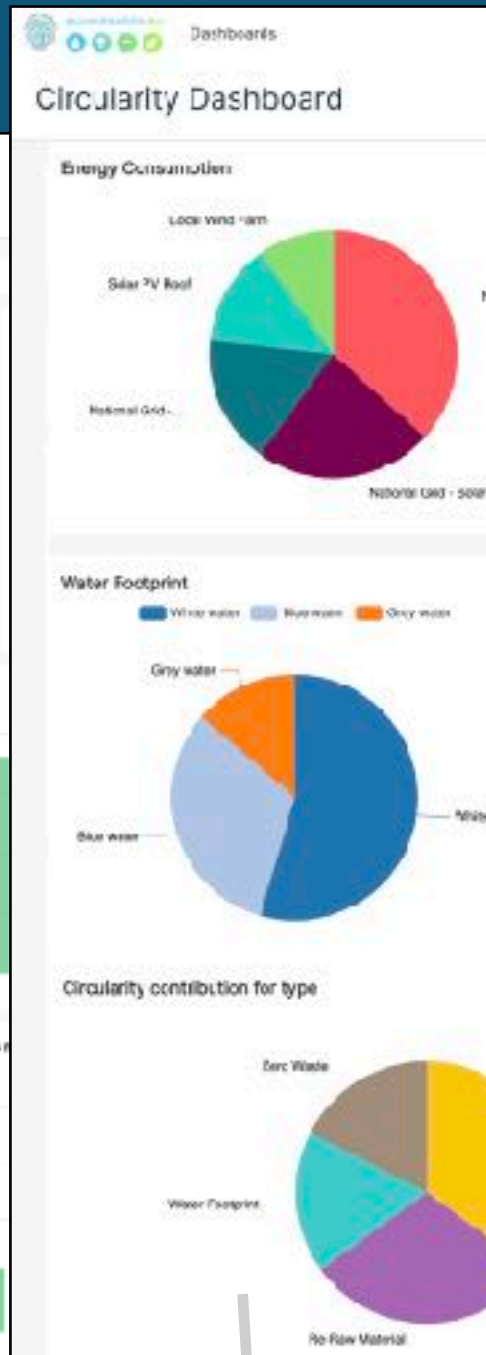
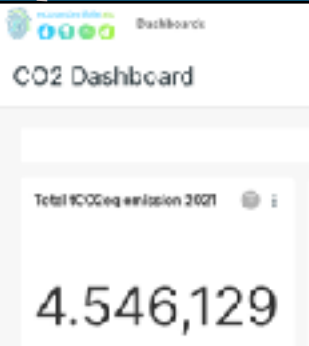
Sustainability disclosure

ETS dashboard

Governance scenario simulation

SGR ESG portfolio

CO₂ dashboard



Circularity dashboard

Offsetting financials

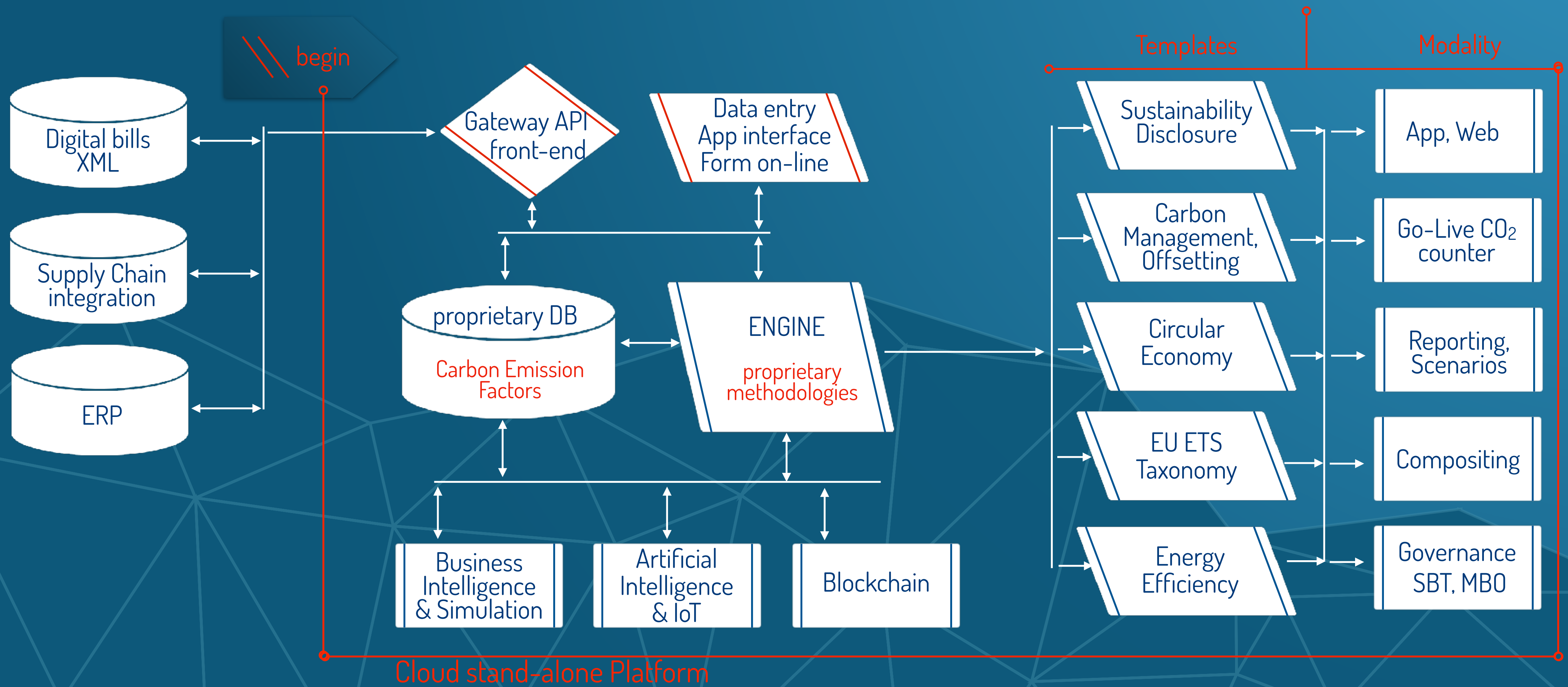
APPs



SBTi, 2030 Transition risk

To report what is relevant for stakeholders and business in accordance with the GRI standard framework, Companies need to identify and consider what's significant so eCO₂[®] SaaS realize automatically reporting, the powerful way to prioritize sustainability work. Select a set of the most significant ESG KPI from the prioritized list

eCO₂® integrates environmental, social and governance KPI into investment choices and business strategies



eCO₂® automates the collection of information already contained in ERPs through APIs (Application Programming Interface) which allow information systems to exchange data in a standardized and encrypted way

The APIs gateway includes various ETL (extraction, transformation, load) interfaces: towards data-lake, towards electronic invoices in the fiscal drawer (XML standard) and even towards XLS checklists

Ecosostenibile - Demo input data interface

GRI	SABB	Category	Emission Source	Month	Site	Business Unit	BU Manager	Unit	Quantity	MBO	+
<input checked="" type="checkbox"/>	<input checked="" type="checkbox"/>	Heating	Consumption of natural gas	2021-01-01	Roma	Human Resource	Alice Rogas	Sm3	506.15	258.02	
<input checked="" type="checkbox"/>	<input checked="" type="checkbox"/>	Heating	Consumption of natural gas	2021-02-01	Roma	Human Resource	Alice Rogas	Sm3	528.33	276.67	
<input checked="" type="checkbox"/>	<input checked="" type="checkbox"/>	Heating	Consumption of natural gas	2021-03-01	Roma	Production	Greta Green	Sm3	221.11	172.81	
<input checked="" type="checkbox"/>	<input checked="" type="checkbox"/>	Heating	Consumption of natural gas	2021-01-01	Roma	Production	Greta Green	Sm3	188.44	168.52	
<input checked="" type="checkbox"/>	<input checked="" type="checkbox"/>	Heating	Consumption of natural gas	2021-02-01	Roma	Production	Greta Green	Sm3	182.22	166.01	
<input checked="" type="checkbox"/>	<input checked="" type="checkbox"/>	Heating	Consumption of natural gas	2021-04-01	Roma	Production	Melio Rossi	Sm3	820	785.02	
<input checked="" type="checkbox"/>	<input checked="" type="checkbox"/>	Heating	Consumption of natural gas	2021-01-01	Roma	Human Resource	Alice Rogas	Sm3	911.67	774.23	
<input checked="" type="checkbox"/>	<input type="checkbox"/>	Heating	Consumption of natural gas	2021-02-01	Roma	Human Resource		Sm3	942.22	781.75	
<input checked="" type="checkbox"/>	<input checked="" type="checkbox"/>	Heating	Consumption of natural gas	2021-03-01	Roma	Human Resource		Sm3	942.22	296.48	
<input checked="" type="checkbox"/>	<input checked="" type="checkbox"/>	Fuel consumption	Fuel consumption - vehicles	2021-01-01	Roma	Human Resource		lt	108.11	67.51	
<input checked="" type="checkbox"/>	<input type="checkbox"/>	Fuel consumption	Fuel consumption - vehicles	2021-02-01	Roma	Human Resource		lt	108.89	97.14	
<input checked="" type="checkbox"/>	<input type="checkbox"/>	Fuel consumption	Fuel consumption - vehicles	2021-03-01	Roma	Human Resource		lt	108.89	92.25	
<input checked="" type="checkbox"/>	<input checked="" type="checkbox"/>	Fuel consumption	Fuel consumption - vehicles	2021-01-01	Roma	Production		lt	78.33	65.81	
<input checked="" type="checkbox"/>	<input type="checkbox"/>	Fuel consumption	Fuel consumption - vehicles	2021-02-01	Roma	Production		lt	108.89	97.57	
<input checked="" type="checkbox"/>	<input type="checkbox"/>	Fuel consumption	Fuel consumption - vehicles	2021-03-01	Roma	Production		lt	108.89	97.48	
<input checked="" type="checkbox"/>	<input type="checkbox"/>	Electricity consumption	Electricity from the national grid	2021-01-01	Roma	Human Resource		Mw	1217.22	966.8	
<input checked="" type="checkbox"/>	<input type="checkbox"/>	Electricity consumption	Electricity from the national grid	2021-02-01	Roma	Human Resource		Mw	1247.78	1014.45	
<input checked="" type="checkbox"/>	<input checked="" type="checkbox"/>	Electricity consumption	Electricity from the national grid	2021-03-01	Roma	Human Resource		Mw	847.78	719.61	
<input checked="" type="checkbox"/>	<input type="checkbox"/>	Electricity consumption	Electricity from the national grid	2021-01-01	Roma	Production		Mw	2528.33	1908.07	
<input checked="" type="checkbox"/>	<input type="checkbox"/>	Electricity consumption	Electricity from the national grid	2021-02-01	Roma	Production		Mw	2053.33	1719.55	

Ecosostenibile - Data upload interface demo

Drag and Drop file here
Or
Click to select file

Filename	Status	Loaded entities
test001.xlsx	Imported	2
test002.xlsx	Imported	3

Engine upload interface

DB CEF

We believe ESG reporting should be simple by anticipating compliance and integrating the best performance indicators with the business. We deeply digitize ESG processes starting from the SDGs and the APPs which, with a survey, create the Materiality Matrix; the involvement of stakeholders includes their definition and mapping starting from the planning of the related objectives

SDGs

Sustainability reporting
Third Party certification

Materiality Matrix

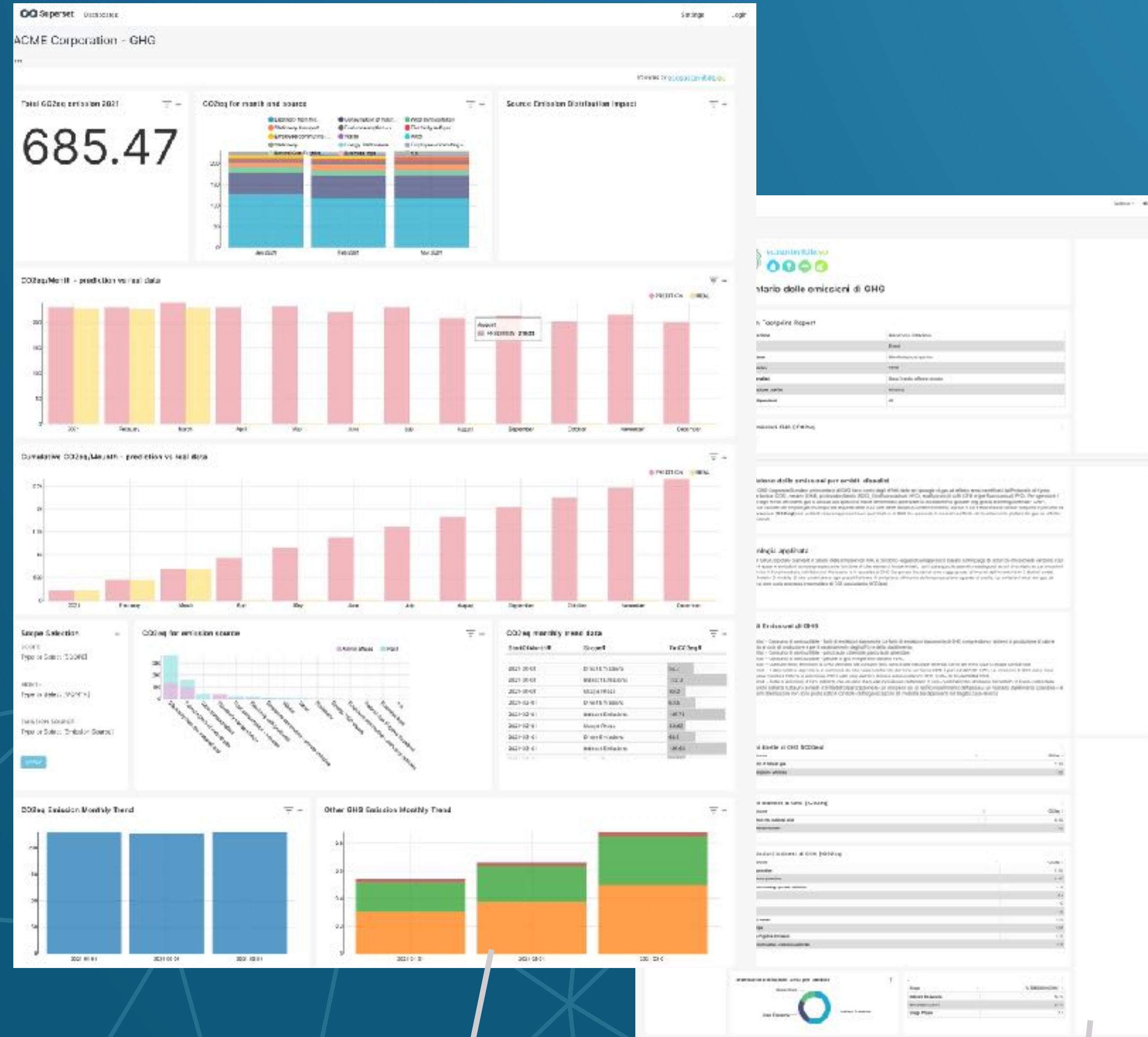
GRI dashboard



APPs

The composing models complement the templates with custom texts and the reports are based on standard GRI (or SASB)

eCO₂[®] è easy, quick to adopt and apply, reliable and guarantees the measurement of the CarbonFootprint and the minimization of direct / indirect CO₂eq (scope 1, 2, 3 2nd level scenarios) of the organization and related products / services. eCO₂[®] has proprietary Carbon Emission Factors DB and segments each type of consumption source by providing the relative CO₂eq, distributed starting from the base year, also calculating the forecasts based on the AI & IoT predictive model.



CO₂ dashboard

Carbon Footprint report
Third Party certification

The heart of eCO₂[®] is the engine based on proprietary LCA methodologies and with the compositing of the text, he creates the GHG inventory, the company's Sustainability Disclosure up to offsetting and carbon neutrality; each template generates reports that can be certified by Third Party (Accordingly to ISO 14040 LCA, 14064, 14067 standard, AGCOM compliance)

eCO₂[®] supports the company's transition to the circular economy, regardless of the sector, complexity and size; the engine based on long_LCA measures the level of circularity achieved in all its operations (renewable IE, re-raw materials, logistics, goods and end of life) Including the **Global Circularity Index** for industry benchmarking and compliance requirements



Circularity dashboard

eCO₂[®] simplifies access to LCA skills, calculates, analyzes and shares scenarios; with text composing, each template creates reporting certifiable by Third Party (accordingly to ISO standard LCA, UNI1608856, AGCOM, compliance), ensuring transparency to investors and customers regarding the integration of circular economy models

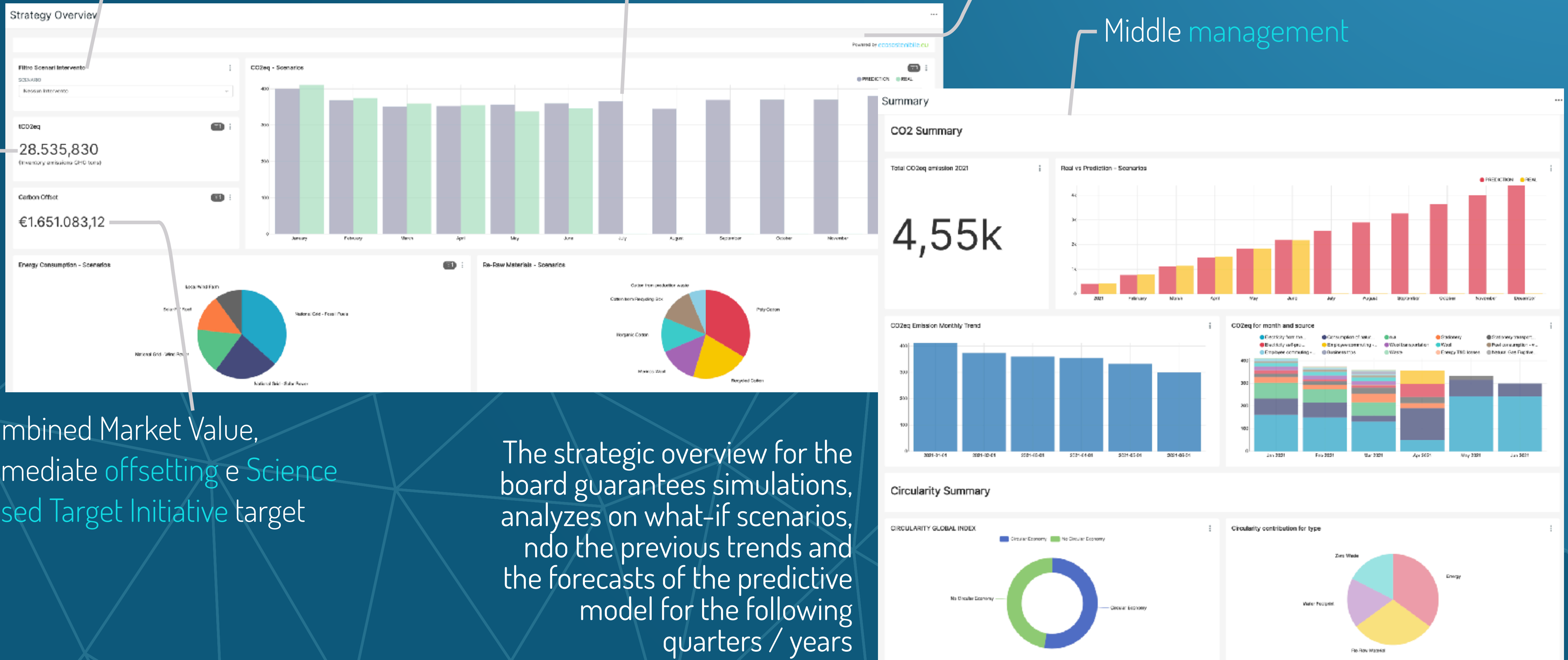
Circularity report
Third Party certification

What-if simulations

Scenario analysis

Top management

Middle management



Combined Market Value,
immediate offsetting e Science
Based Target Initiative target

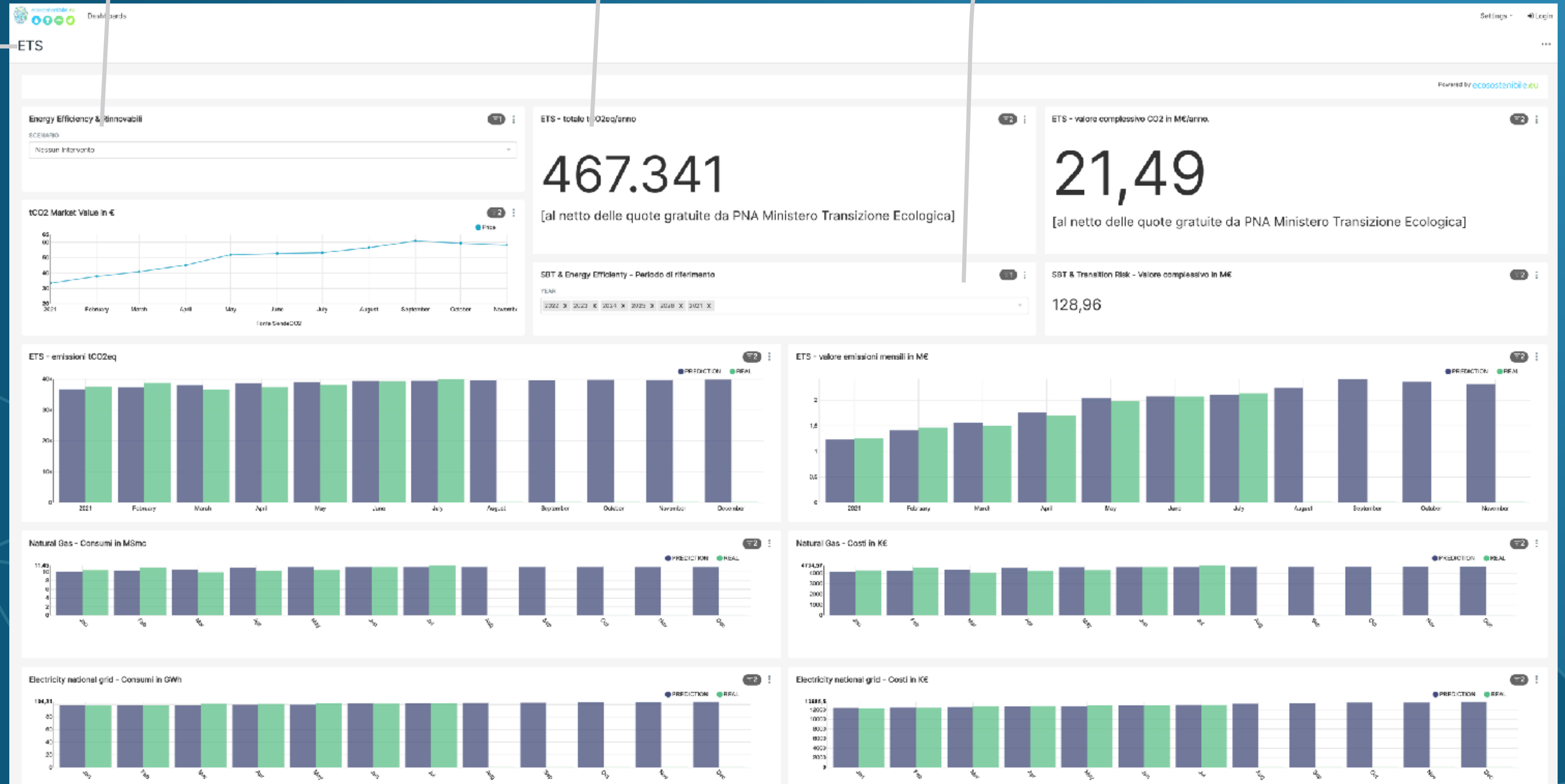
The strategic overview for the board guarantees simulations, analyzes on what-if scenarios, and the previous trends and the forecasts of the predictive model for the following quarters / years

What-if simulations

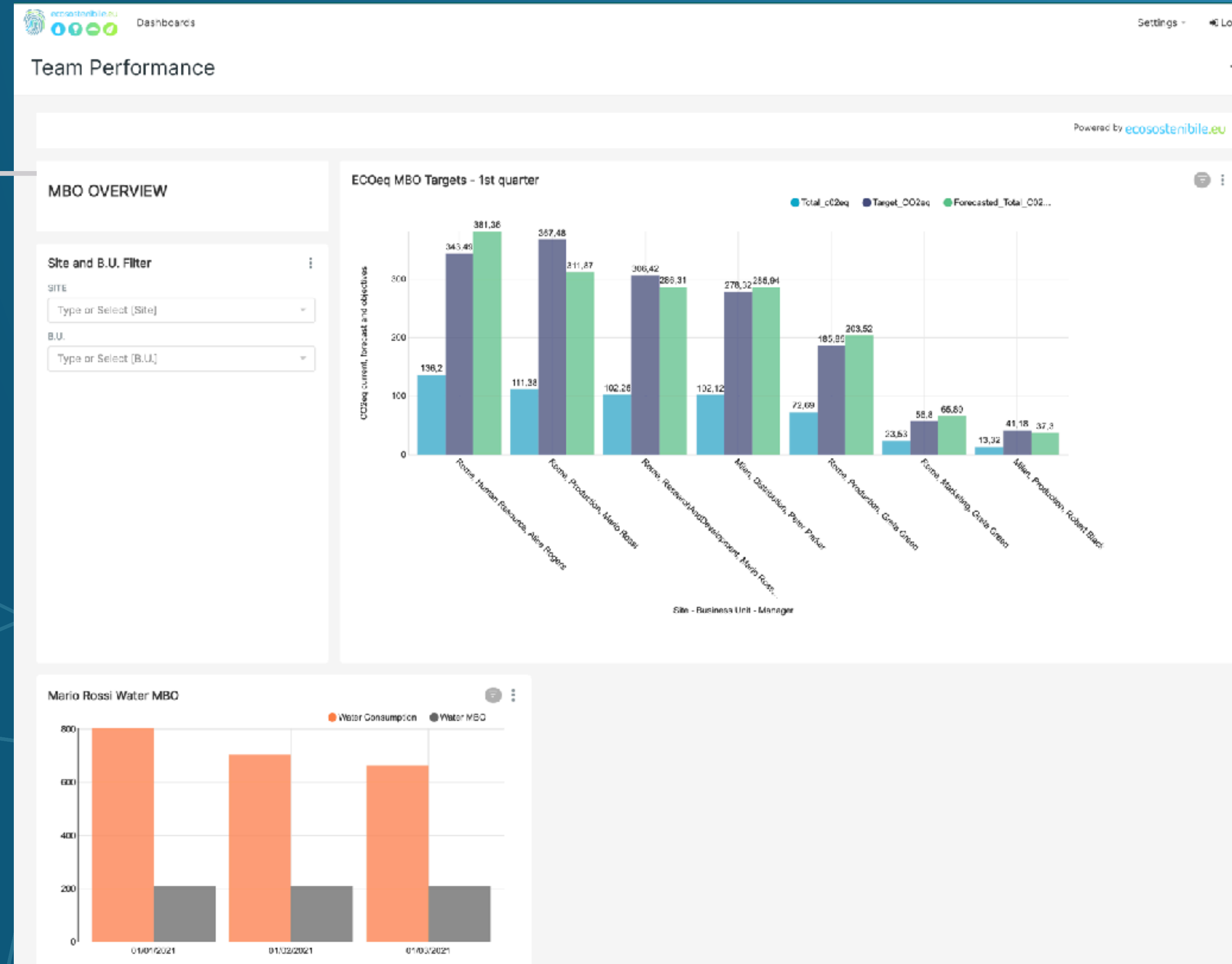
Scenario analysis

Energy efficiency saving

ETS market value, immediate offsetting and transition risk compared to 2030 and 2050 with simulations based on what-if scenarios, analyzing energy efficiency and fuel switch benchmarks (IE green hydrogen) and the forecast of the predictive model for the following quarters / years



eCO₂® helps the HR departments in the company to geolocate, manage and measure sustainability performance and thus give proper recognition to the MBOs achieved by the team



The eCO₂® custom for asset management companies, it allows to check ESG performance with the plug-ins of the investee companies, the SDGs, the CO₂ value of the cap & trade subjects in the ETS market and the sector social benchmarks to collect, aggregate and improve their ESG processes



SDGs

GRESB reporting, immediate offsetting & SBTi target, (accordingly to ISO standard 14040 LCA, 14067, UNI1608856, AGCOM compliance)



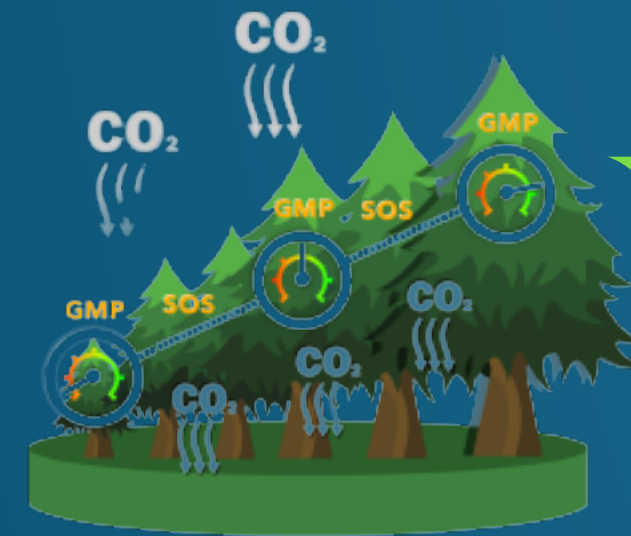
LIFECYCLE TOTALE EMISSIONI



[Lifecycle movie](#) to communicate sustainability projects implemented



[Go-live CO₂ counter](#) monitors in every moment and on every device (smartphone, big screen) the CO₂ savings in the environment



OFFSETTING EU ETS sell/buy



Machine learning, predictions



Blockchain
enabled energy
efficiency &
CO₂ offsetting

Smart contract
processes
incoming data



IoT enabled Smart Meter
captures the reading of
power consumption

Indirect Emissions
Purchased electricity
for own use



Direct Emissions
Fuel combustion



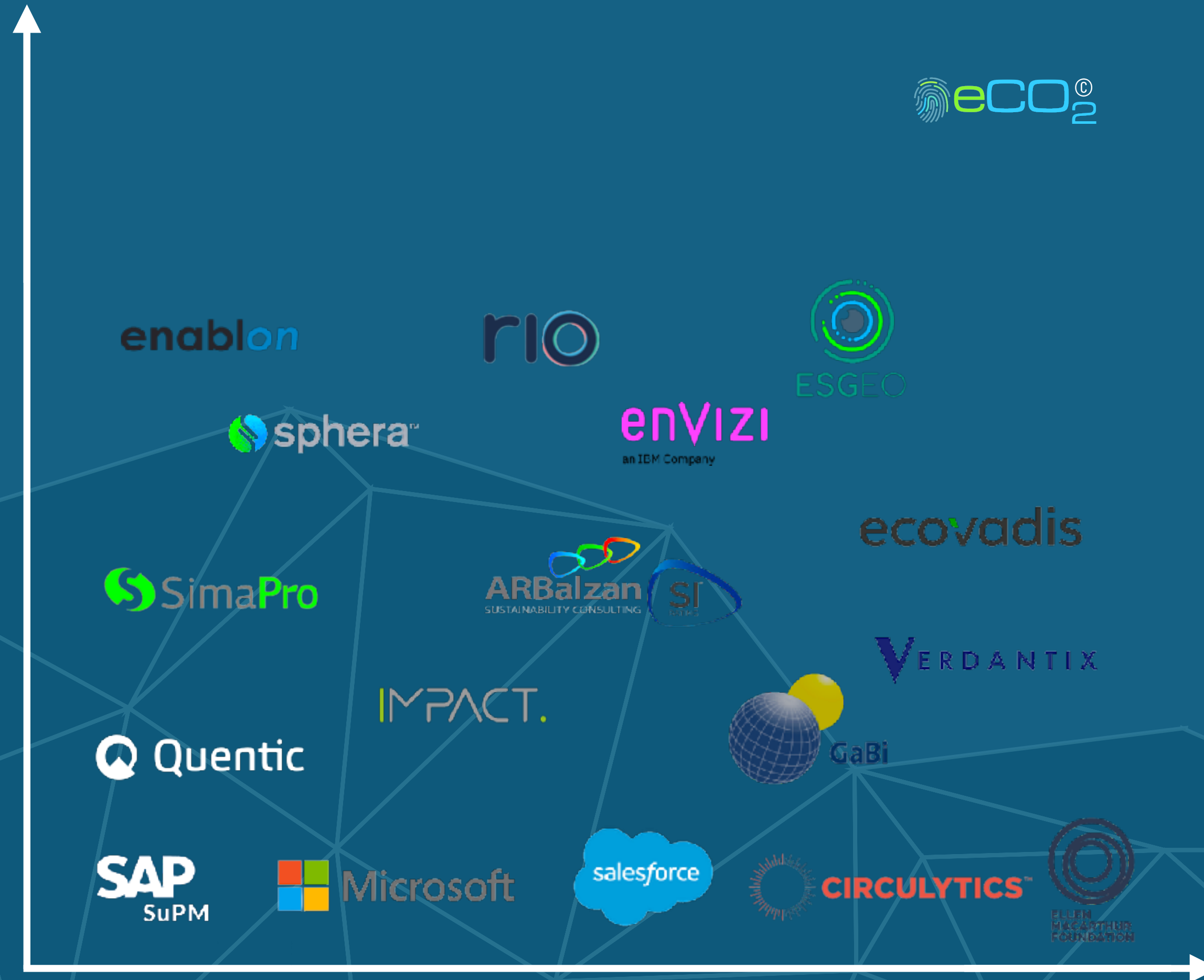
IoT enabled CO₂ meter, emission
data collecting



eCO₂[®] is the only **All-in-1** platform on the market

- APIs data collection
- ISO measuring
- Third Party certification
- Insourcing
- Scenario simulation

of ESG PROCESS



AUTOMATION

We all have two things in common: we want to win the great challenge of our times: reaching Kyoto Protocol and Paris Agreement **climate change goals** and we love **binary code**. We are **agents of change**, working to build a sustainable future, helping organizations to define, shape and implement clever and successful environmental sustainability solutions. We are engaged in Creating Shared Value leading resilient strategies, robust metrics, useful tools, and credible communications to a diverse set of organization, brands, public and private companies



Discover how to create value with a strategic approach to ESG management



get the game changer demo
and full documentation

Daniele Roscino Avetrani
Founder & CEO
d.roschino@ecosostenibile.eu